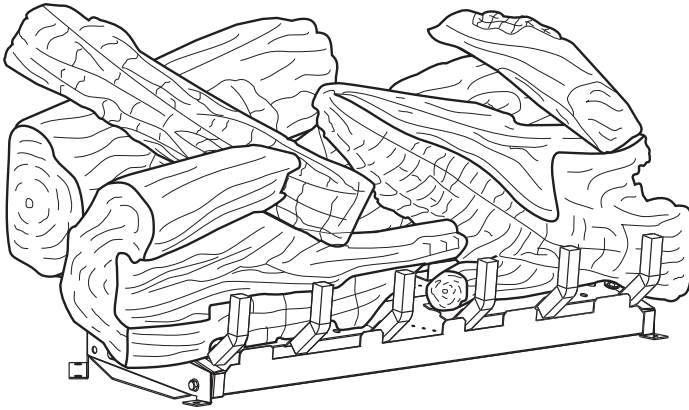




# INSTALLATION INSTRUCTIONS AND OWNER'S MANUAL

## YORKTOWN



LS-24YK-2 Shown

**Installer:** Leave this manual with the appliance.  
**Consumer:** Retain this manual for future reference.

**WARNING:** If the information in these instructions are not followed exactly, a fire or explosion may result causing property damage, personal injury or loss of life.

- Do not store or use gasoline or other flammable vapors and liquids in the vicinity of this or any other appliance.
- **WHAT TO DO IF YOU SMELL GAS**
  - Do not try to light any appliance.
  - Do not touch any electrical switch; do not use any phone in your building.
  - Immediately call your gas supplier from a neighbor's phone. Follow the gas supplier's instructions.
  - If you cannot reach your gas supplier, call the fire department.
- Installation and service must be performed by a qualified installer, service agency or the gas supplier.

Log sets comply with ANSI Z21.11.2 Unvented Heaters and also comply with ANSI Z21.60 Decorative Vented Appliances for Solid Fuel Burning Fireplaces. State or local codes may only allow operation of log sets in a vented configuration. Check your state or local codes.

**LOG SET FOR UNVENTED  
GAS LOG HEATER  
OR  
VENTED DECORATIVE APPLIANCE**

### MODELS

ALS-18YK-1  
ALS-24YK-2  
ALS-30YK-2



We suggest that our gas hearth products be installed and serviced by professionals who are certified in the U.S. by the National Fireplace Institute® (NFI) as NFI Gas Specialists.

**WARNING:** If not installed, operated and maintained in accordance with the manufacturer's instructions, this product could expose you to substances in fuel or from fuel combustion which can cause death or serious illness.

The QR Code below provides a link to our helpful "how-to" video. To get started, scan the code with your smart phone or tablet.



# TABLE OF CONTENTS

Section	Page
Important Installation Guidelines .....	3
General Information.....	3
Requirements for Canada .....	4
Log Identification LS-18YK.....	5
Log Placement LS-18YK .....	6-12
Log Identification LS-24YK.....	13
Log Placement LS-24YK .....	14-21
Log Identification LS-24YK.....	22
Log Placement LS-30YK.....	23-31
Ember Placement LS-18YK Photos .....	32
Ember Placement LS-24YK Photos .....	33
Ember Placement LS-30YK Photos .....	34
Master Parts Distributor List .....	35
How to Order Repair Parts .....	35
Parts Lists and Parts Views.....	36

# IMPORTANT INSTALLATION GUIDELINES

## **Proper Log Placement**

Log placement is critical to proper burner performance. Logs must be correctly positioned onto the burner. The photos in this manual show the proper pinned position for logs on this set. Owners need to be shown proper log placement and instructed not to move the logs.

Logs must fit firmly onto the burner when positioned as shown in the photos. Malformed logs or logs with sloppy pin holes must be replaced.

## **Proper Placement of Rock Wool and Decorative Lava Rock**

Rock wool can be added to burners for a glowing ember effect. It must be positioned only on the front portion of the burner. The photos in this manual show the proper placement of rock wool.

Decorative lava rock or small wood pieces should never be placed on the burner. These items are only for placement on the floor of the fireplace or firebox.

## **Proper Primary Airflow into Burner**

For proper burner operation and flame appearance, the flow of primary air into the venturi tube, located on the rear of the burner, must not be reduced. This flow of air is reduced if dirt, lint or other obstructions build-up around or inside the venturi. Any obstruction in the venturi tube area must be removed. The flow of air into the venturi is also reduced if the gas orifice isn't centered in the venturi inlet and/or is not aligned with the venturi. Any misalignment of the burner orifice may be corrected by bending the shutter cap holding the orifice to the inlet of the venturi tube.

## **Ceiling Fans, Portable Fans or Logs Installed Near Cold Air Returns**

Ceiling fans or oscillating floor type fans need to be monitored during the operation of vent-free logs. If the air blows directly into the flame causing it to impinge on the log set, or firebox, it should be turned off or redirected. Ceiling fans could be reversed to possibly eliminate flame impingement, and the floor fan could be redirected. Upon installation, be aware of any cold air returns or vents in the proximity of the log set. Any draft created around a vent-free log set can cause the flame to impinge on the log and create a sooting situation.

**WARNING:** Do not allow fans to blow directly into the fireplace. Avoid any drafts that alter burner flame patterns.

**WARNING:** Do not use a blower insert, heat exchanger insert or other accessory not approved for use with this heater.

## **Candles**

Avoid the use of scented or decorative candles while the log set is in operation. Candles produce a residue in the air that creates a soot like substance. Burning candles while the log set is operating magnifies the problem. It should be noted that candles, in general, produce soot. The amount of time burned and the quantity of candles burned will determine the amount of soot produced and deposited.

## **Make Owners Aware of Proper Log Set Operation**

Properly installed and properly maintained log sets do not deposit soot on the logs. If users see soot appear on a log, call for service. Do not continue to operate the log set.

## **Sunken Fireplace**

If installing this unit into a sunken fireplace, you must raise the floor to insure adequate airflow and guard against sooting. Raise fireplace floor using a non-combustible material, which is secure.

## **Glass Doors**

Make sure that glass doors are open during all operations of the logset. The opening of the glass door frame should be the dimension used for the minimum front opening of the firebox.

## **Wood Burning Fireplaces**

The interior of the firebox and the chimney should be cleaned and free of all creosote before installing a gas burning log set. Creosote will soften when heated and can drop on the logset causing odors and possibly sooting.

**WARNING:** Before installing in a solid-fuel burning fireplace, the chimney flue and firebox must be cleaned of soot, creosote, ashes and loose paint by a qualified chimney cleaner.

# GENERAL INFORMATION

## **Qualified Installing Agency**

Installation and replacement of gas piping, gas utilization equipment or accessories and repair and servicing of equipment shall be performed only by a qualified agency. The term "qualified agency" means any individual, firm, corporation, or company that either in person or through a representative is engaged in and is responsible for (a) the installation, testing, or replacement of gas piping or (b) the connection, installation, testing, repair, or servicing of equipment; that is experienced in such work; that is familiar with all precautions required, and that has complied with all the requirements of the authority having jurisdiction.

The installation must conform with local codes or, in the absence of local codes, with the *National Fuel Gas Code, ANSI Z223.1/ NFPA54*.\*

\*Available from the American National Standards Institute, Inc. 11 West 42nd St., New York, N.Y. 10018.

**State of Massachusetts:** The installation must be made by a licensed plumber or gas fitter in the Commonwealth of Massachusetts.

Sellers of unvented propane or natural gas-fired supplemental room heaters shall provide to each purchaser a copy of 527 CMR 30 upon sale of the unit.

In the State of Massachusetts, unvented propane and natural gas-fired space heaters shall be prohibited in bedrooms and bathrooms.

# REQUIREMENTS FOR CANADA

This unit **cannot** be installed in a UNVENTED application, this unit **can only** be installed as a VENTED application with these requirements.

## **IMPORTANT SAFETY INFORMATION**

This unit complies with ANSI Z21.60 and CGA 2.26 Decorative Gas Appliances For Installation In Solid Fuel Burning Fireplaces. Do not burn wood or solid fuels in a fireplace where a decorative gas log set is installed. This appliance is for installation only in a solid fuel burning fireplace, masonry fireplace or manufactured fireplace.

**Warning:** Any modification to this gas log set or to controls can be dangerous. Improper installation or use of the gas log set can cause serious injury or death from fire, burns, explosion or carbon monoxide poisoning.











1. Please follow all local codes regarding installation, combustion and ventilation air or in the absence of local codes follow the National Fuel Gas Code ANSI Z223.1(U.S. installation), or CAN/CGA-B149, Installation Code (Canada installation).
2. Proper installation, burner pan location and log placement is important to achieve optimum look and performance of your gas log set. The logs have been designed for easy location and placement on the grate and must be followed for proper operation.
3. Do not operate this log set with glass doors in the closed position. A fireplace screen must be in place when the log set is burning. Adequate combustion air must be provided for proper venting. All flames should go up and out the top of the firebox into the flue vent. If any flames float or curl forward into the room do not operate appliance. Check for an open flue and adequate combustion air into the room. A damper clamp must be installed on the firebox damper to maintain an open flue vent condition. See fireplace instructions manual for installing damper clamp.
4. Young children must be carefully supervised when they are in the same room as the gas log while in operation. Do not place stockings, clothing or any flammable material above or near the fireplace.
5. Do not substitute or use materials other than those supplied for use with the log set.
6. Also refer to IMPORTANT SAFETY INFORMATION on page 3 of this manual

## **WARNING; DO NOT OPERATE THIS GAS LOG SET WITH GLASS DOORS CLOSED**

- Clothing or other flammable material should not be placed on or near the appliance.
- Do not place trash or other articles on the log set during operation.
- During manufacturing, fabricating and shipping, various components of this appliance are treated with certain oils, films or bonding agents. These bonding agents are not harmful but may produce annoying smoke and smells as they are burned off during initial operation of the appliance. This is a normal temporary occurrence. A window should be opened during the initial bake out period.
- Keep burner and control compartment clean.
- **WARNING:** Before installing in a solid fuel burning fireplace, the chimney flue and firebox must be cleaned of soot, creosote, ashes and loose paint by a qualified chimney cleaner.

- Installation and repair should be done by a qualified service person. The appliance should be inspected before use and at least annually by a qualified service person. More frequent cleaning may be required due to excessive lint from carpeting, bedding materials, etc. It is imperative that control compartments, burners and circulating air passageways of the appliance be kept clean.
- **Do not** put anything around the fireplace that will obstruct the flow of ventilation air.
- **Do** keep the appliance area clear and free from combustible material, gasoline and other flammable vapors and liquids.
- A yearly examination and cleaning of the venting system of the solid-fuel burning fireplace must be performed by a qualified agency.
- **Do** make a periodic visual check of pilot and burners. Clean and replace damaged parts.
- **Do not** use this appliance if any part has been under water. Immediately call a qualified service technician to inspect the appliance and to replace any part of the control system and any gas control which has been under water.
- Never burn solid fuels in fireplace where a gas log set is installed.
- This unit complies with ANSI Z21.60 Decorative Vented Appliances for Solid Fuel Burning Fireplaces. State or local codes may only allow operation of this appliance in a vented configuration. Check your state or local codes.

# ALS-18YK LOG IDENTIFICATION

Log Description	Part Number	Front View	Top View
Log A	R10257		
Log B	R10258		
Log C	R10260		
Log D	R10259		
Log F	R10262		

Note: ALS-18YK does not contain a Log E and is not needed for assembly.

# LOG PLACEMENT ALS-18YK

Before you begin: Do not, handle these logs with your bare hands! Always wear gloves to prevent skin irritation. After handling logs, wash your hands gently with soap and water.

## All Logs

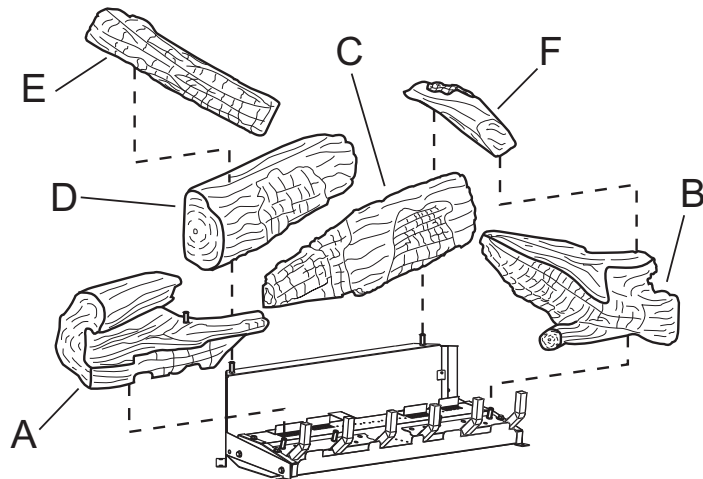
The positioning of the logs is critical to the safe and clean operation of this heater. Sooting and other problems may result if the logs are not properly and firmly positioned in the appliance.

### ⚠ WARNING

This appliance is equipped for (natural or propane) gas. Field conversion is not permitted.

### ⚠ WARNING

Failure to position the parts in accordance with this diagram or failure to use only parts specifically approved with this appliance may result in property damage or personal injury.



Log Placement  
LS-18YK Logs

Figure 1

**Note:** LS-18YK does not contain a Log E and is not needed for assembly.

## Ember Placement

Apply loose material (glowing embers) per appropriate Installation Instructions and Owner's Manual. Replacement of loose material (glowing embers) must be purchased from Empire Comfort Systems, Inc. Application of excess loose material (glowing embers) may adversely affect performance of the heater. **WARNING:** All previously applied loose material must be removed prior to reapplication.

Replacement Loose Material (glowing embers)	Part Number
ALS-18YK	15999
Platinum Bright Embers	PE-20-1

**Note:** A single layer of embers is to be used when applying Platinum Bright Embers (alone or in combination with production embers) to the burner.

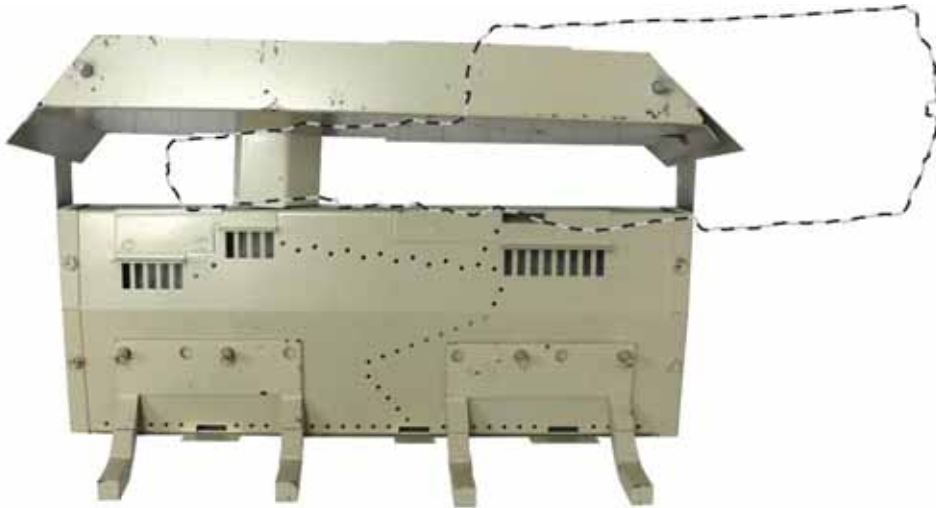
**Attention:** Do not use Figure 1 to order replacement logs. Refer to Page 35 Parts List and Parts View to order logs for your appropriate model number.

Scan this code to see the log assembly video.

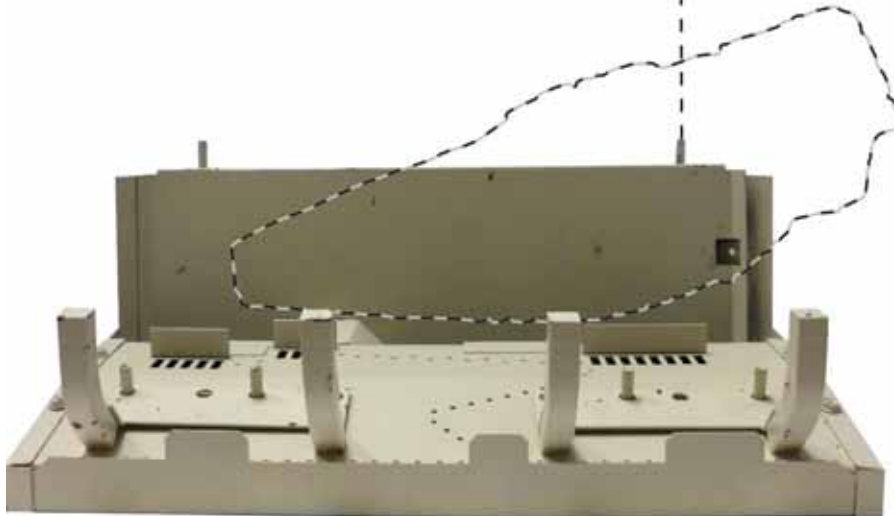


# LOG PLACEMENT ALS-18YK

1. Place Log C onto right rear pin on rear log support as shown below.



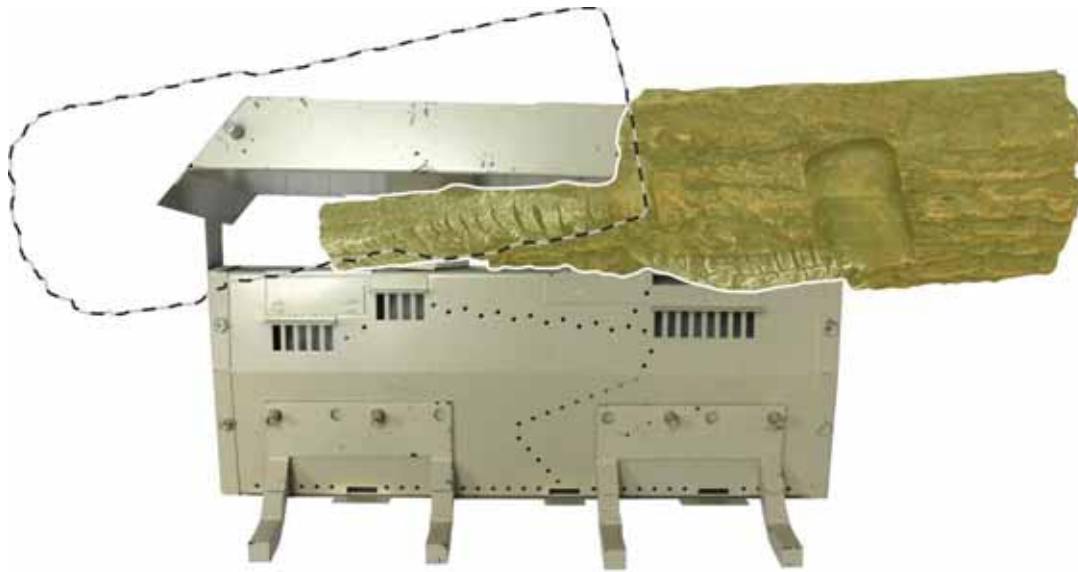
TOP VIEW



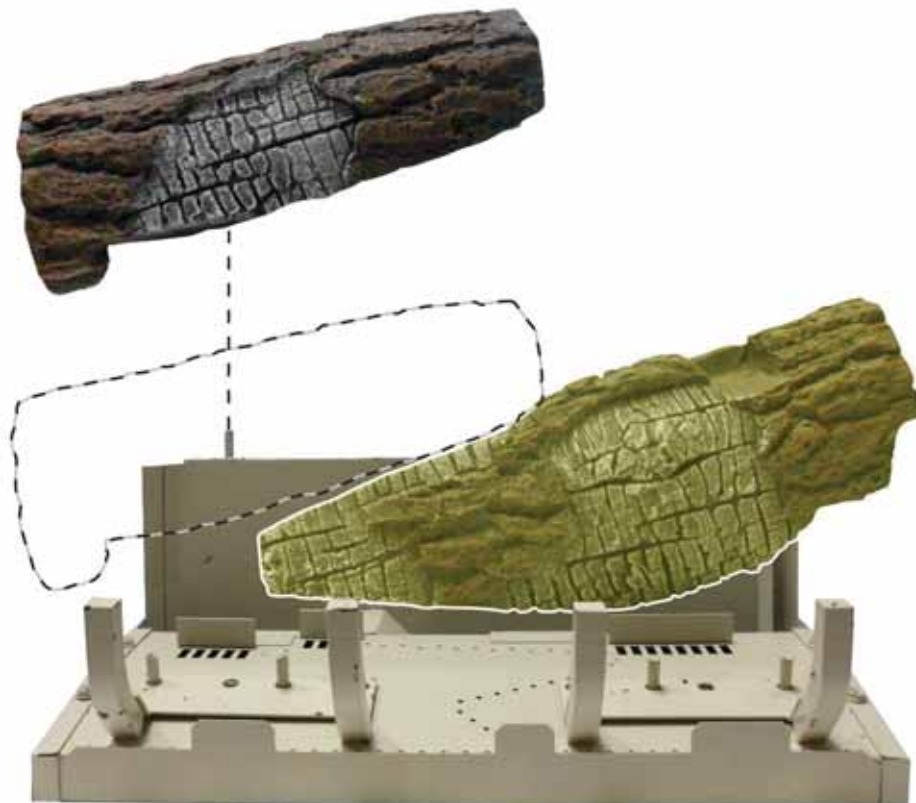
FRONT VIEW

# LOG PLACEMENT ALS-18YK

2. Place Log D onto left rear pin on rear log support as shown below.



TOP VIEW



FRONT VIEW

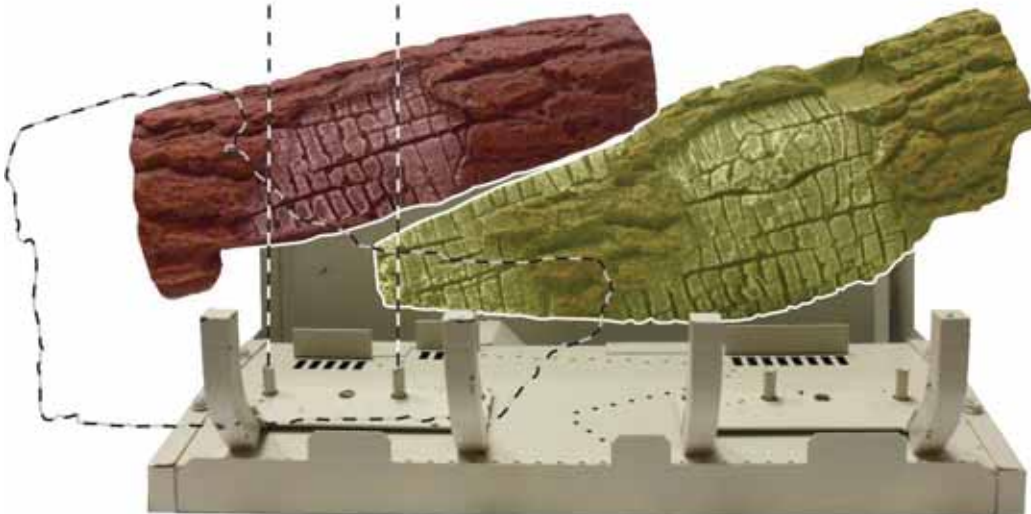


# LOG PLACEMENT ALS-18YK

3. Place Log A onto two front left burner pins as shown below.



TOP VIEW



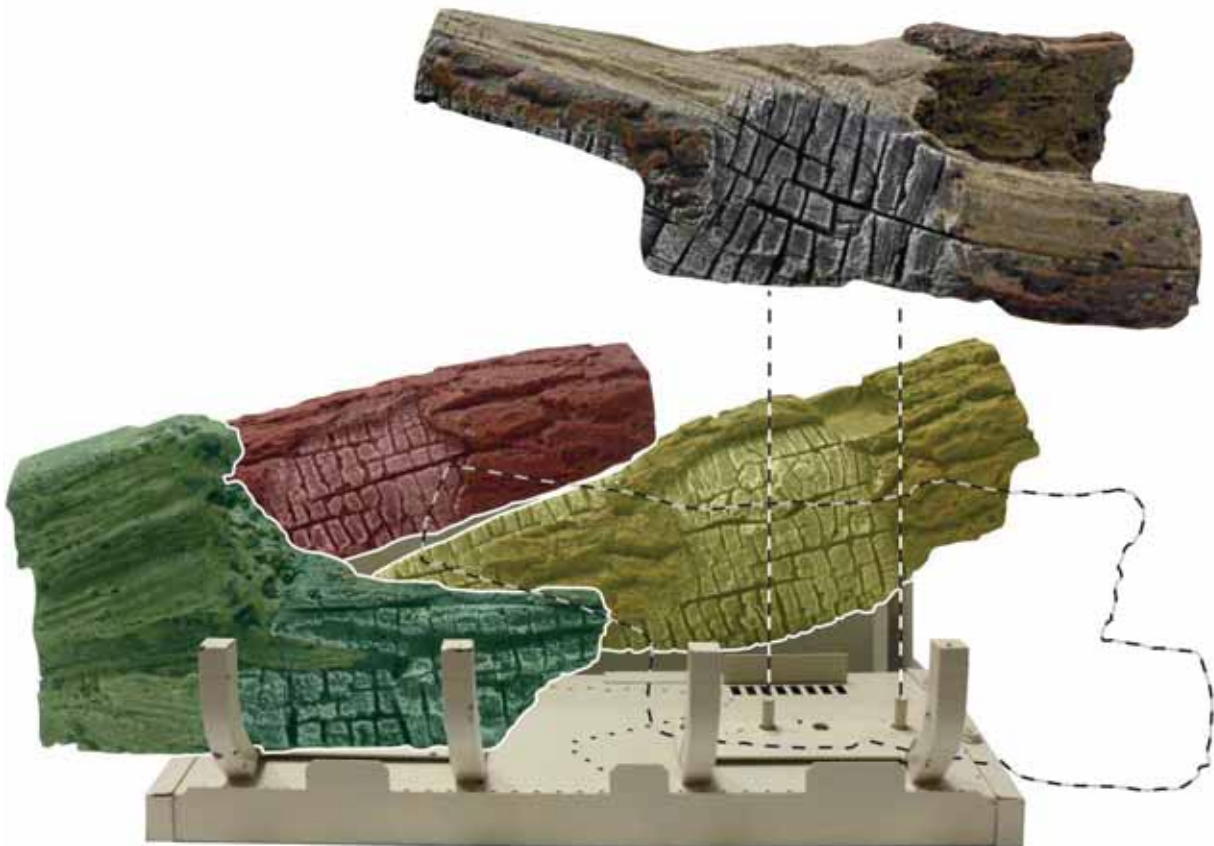
FRONT VIEW

# LOG PLACEMENT ALS-18YK

4. Place Log B onto two front right burner pins as shown below.



TOP VIEW



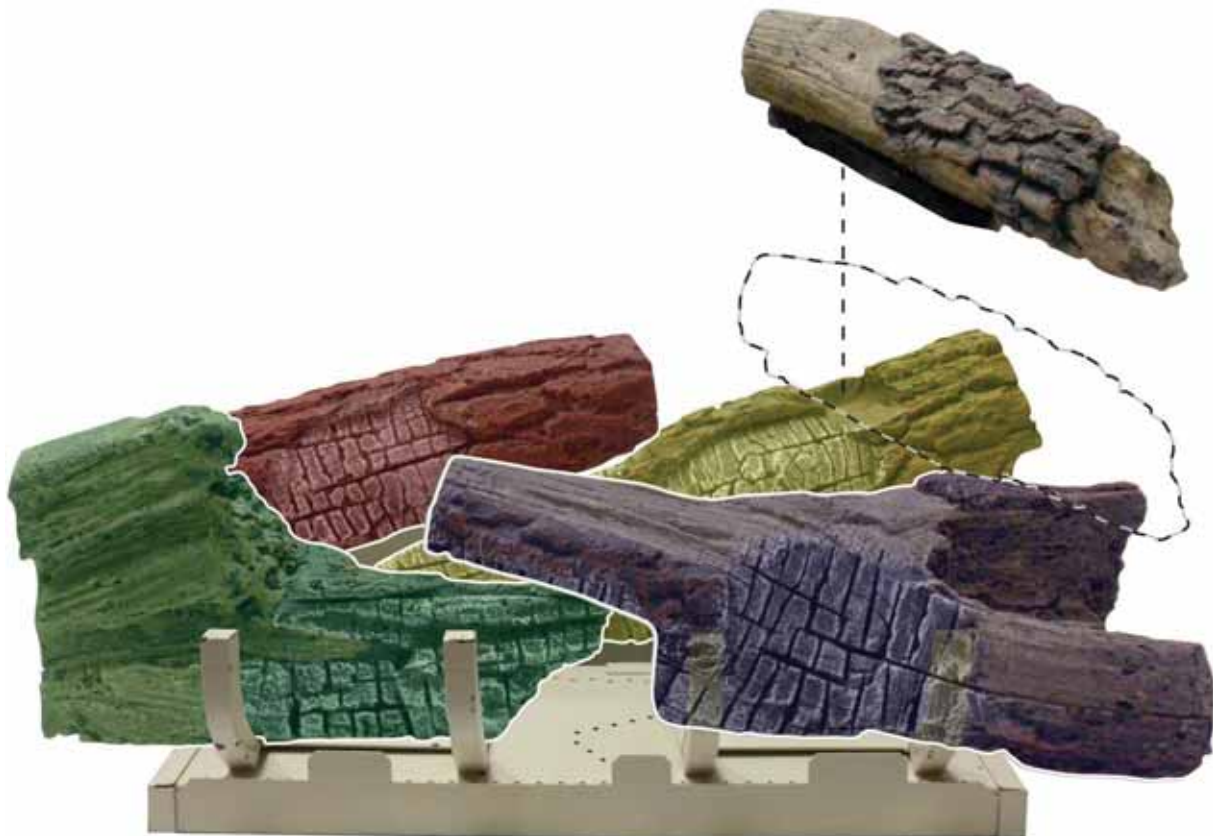
FRONT VIEW

# LOG PLACEMENT ALS-18YK

5. Insert boss on Log F into recess on right side of Log C and Log B as shown below.



TOP VIEW



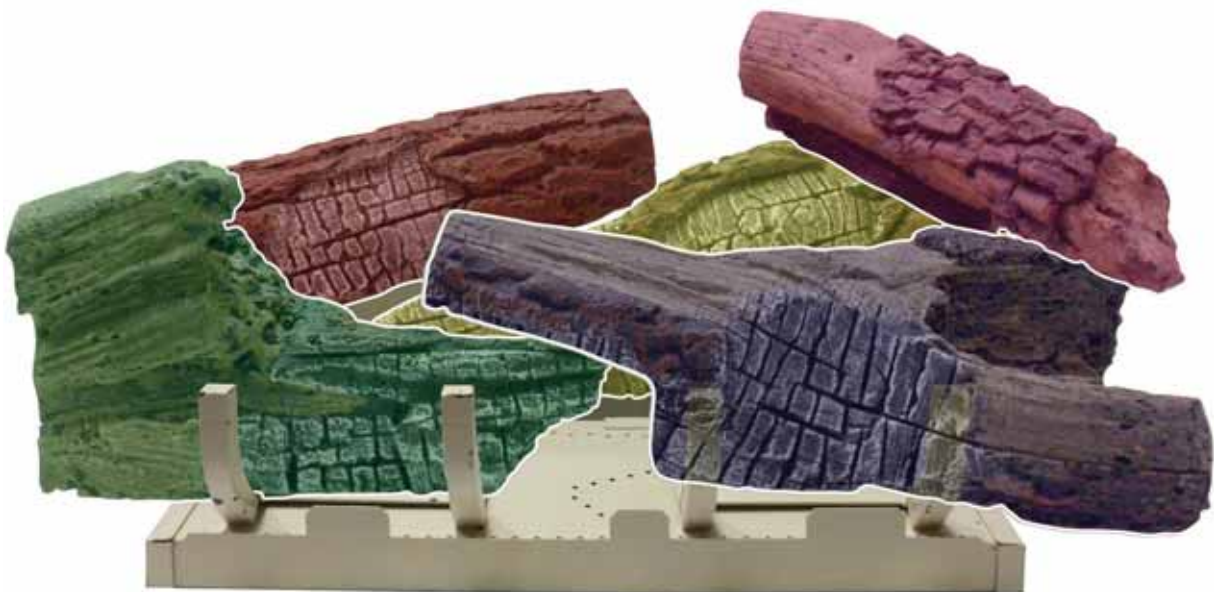
FRONT VIEW

# LOG PLACEMENT ALS-18YK

6. Log placement is completed.











TOP VIEW



FRONT VIEW

# ALS-24YK LOG IDENTIFICATION

Log Description	Part Number	Front View	Top View
Log A	R10264		
Log B	R10265		
Log C	R10267		
Log D	R10266		
Log E	R10268		
Log F	R10262		

# LOG PLACEMENT ALS-24YK

Before you begin: Do not, handle these logs with your bare hands! Always wear gloves to prevent skin irritation. After handling logs, wash your hands gently with soap and water.

## All Logs

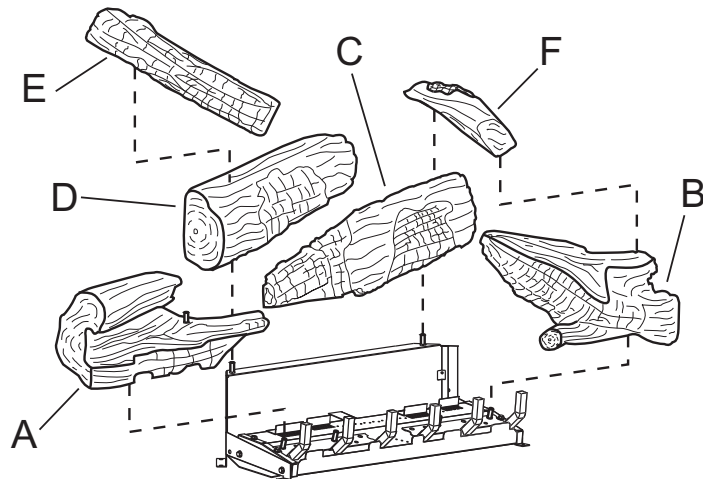
The positioning of the logs is critical to the safe and clean operation of this heater. Sooting and other problems may result if the logs are not properly and firmly positioned in the appliance.

### ⚠ WARNING

This appliance is equipped for (natural or propane) gas. Field conversion is not permitted.

### ⚠ WARNING

Failure to position the parts in accordance with this diagram or failure to use only parts specifically approved with this appliance may result in property damage or personal injury.



Log Placement  
LS-24YK Logs

Figure 2

## Ember Placement

Apply loose material (glowing embers) per appropriate Installation Instructions and Owner's Manual. Replacement of loose material (glowing embers) must be purchased from Empire Comfort Systems, Inc. Application of excess loose material (glowing embers) may adversely affect performance of the heater. **WARNING:** All previously applied loose material must be removed prior to reapplication.

Replacement Loose Material (glowing embers)	Part Number
ALS-24YK	15970
Platinum Bright Embers	PE-20-1

**Note:** A single layer of embers is to be used when applying Platinum Bright Embers (alone or in combination with production embers) to the burner.

Attention: Do not use Figure 2 to order replacement logs. Refer to Page 35 Parts List and Parts View to order logs for your appropriate model number.

Scan this code to see the log assembly video.

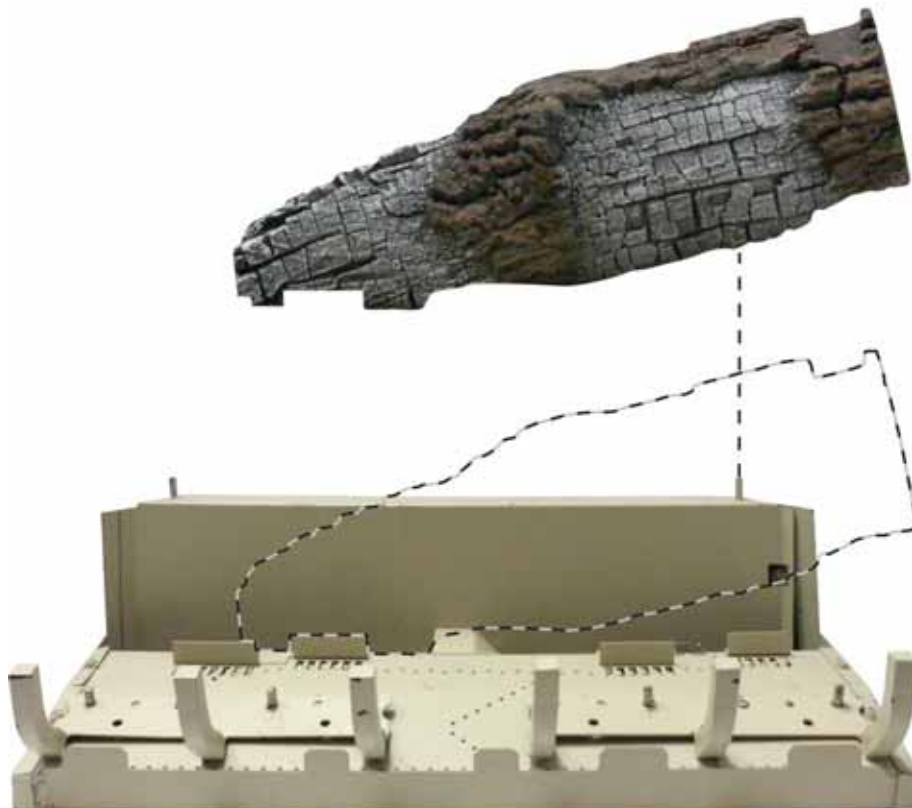


# LOG PLACEMENT ALS-24YK

1. Place Log C onto right rear pin on rear log support as shown below.



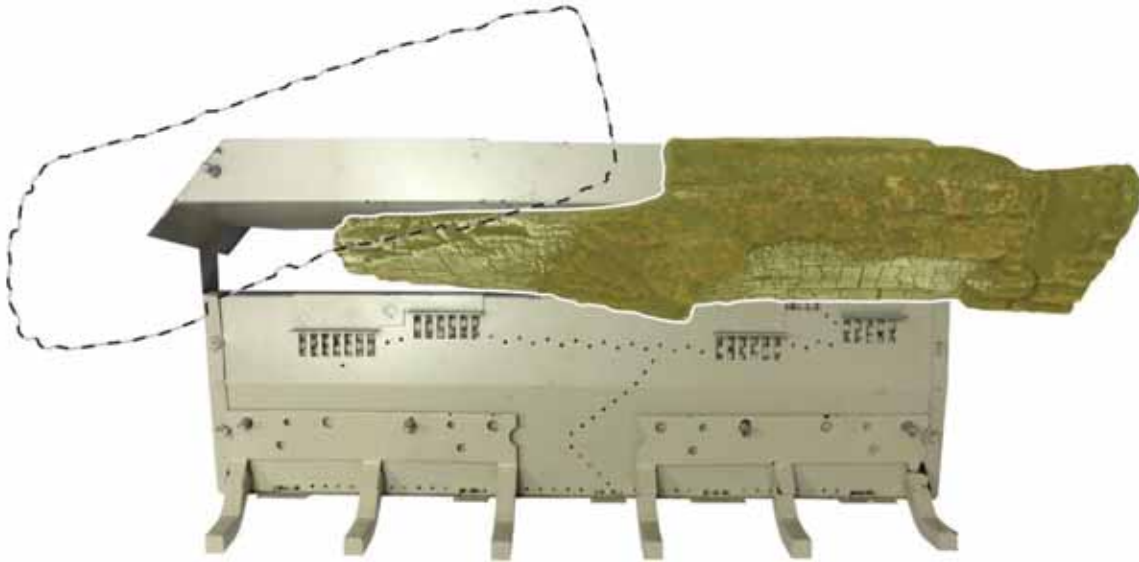
TOP VIEW



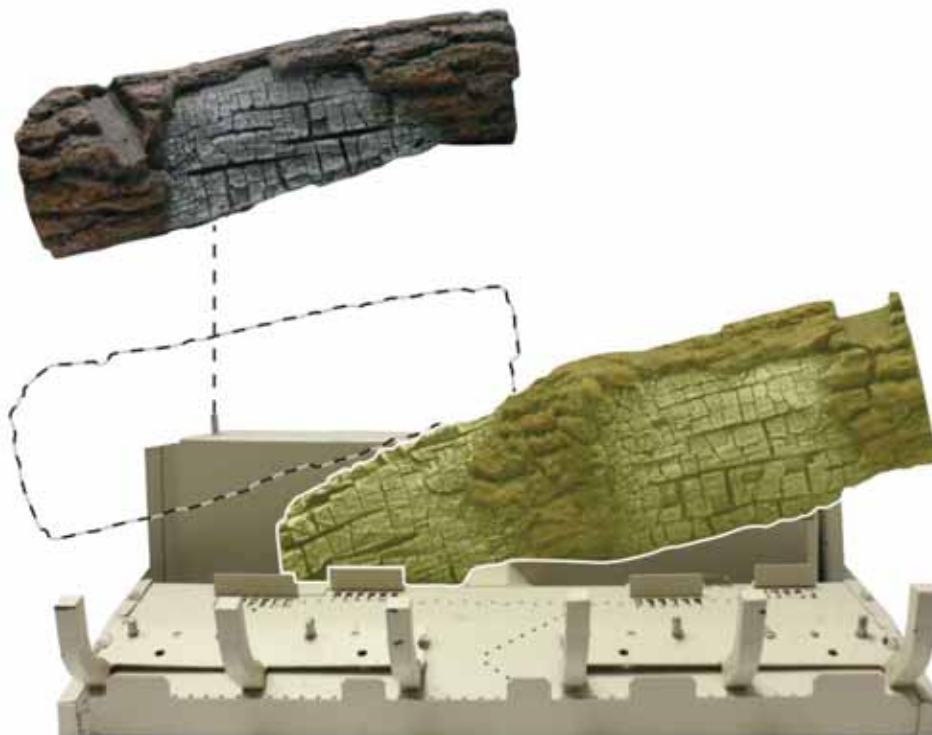
FRONT VIEW

## LOG PLACEMENT ALS-24YK

2. Place Log D onto left rear pin on rear log support as shown below.



TOP VIEW

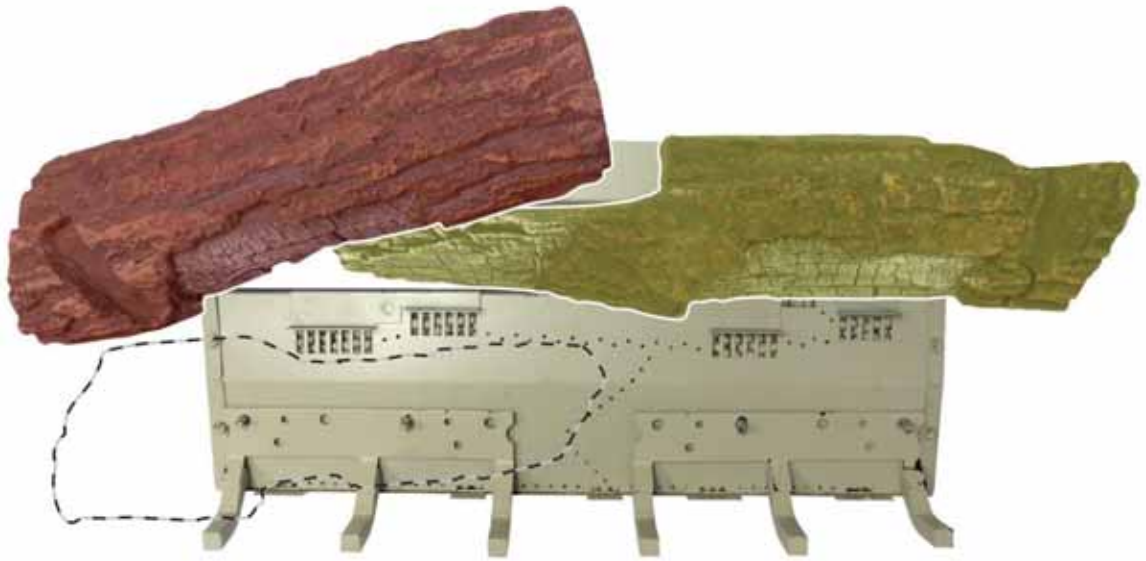


FRONT VIEW



# LOG PLACEMENT ALS-24YK

3. Place Log A onto two front left burner pins as shown below.



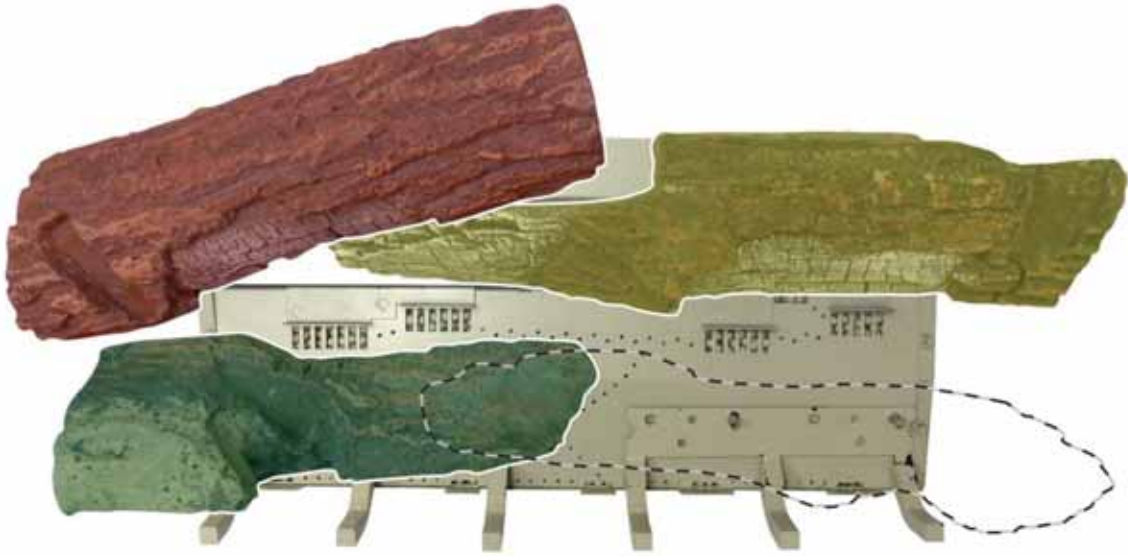
TOP VIEW



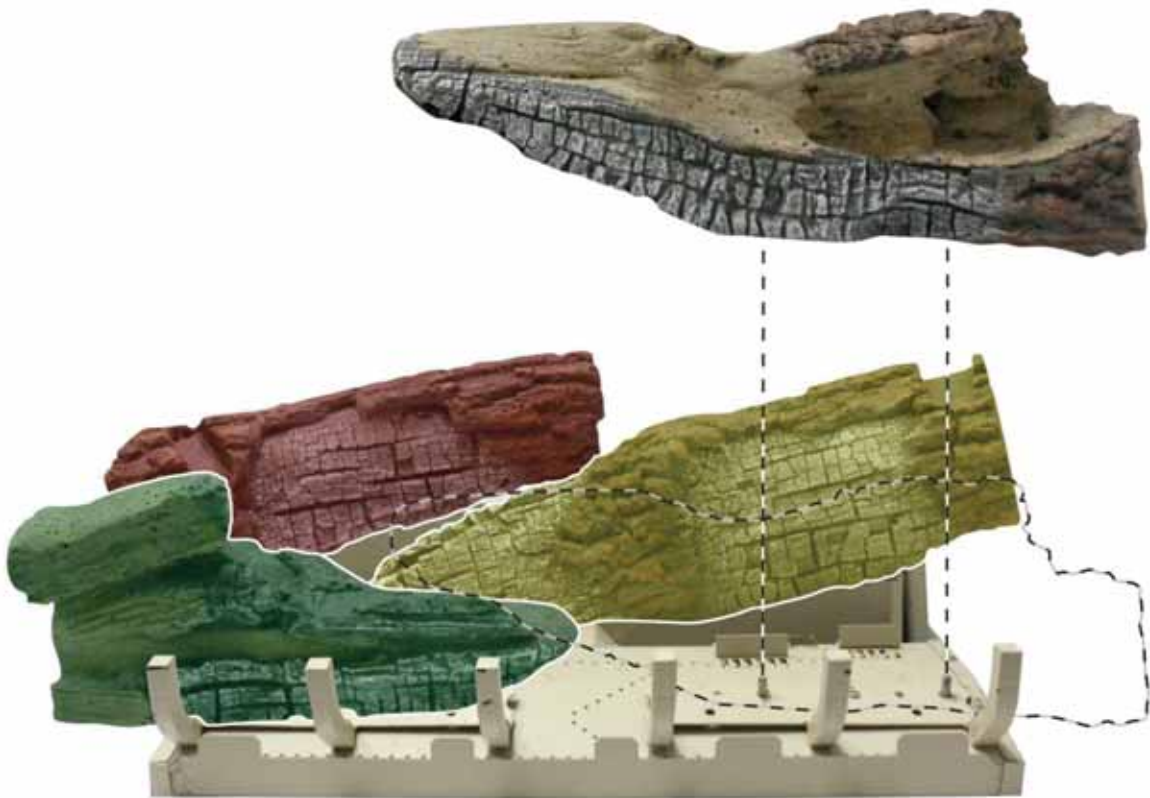
FRONT VIEW

# LOG PLACEMENT ALS-24YK

- Place Log B onto two front right burner pins as shown below.



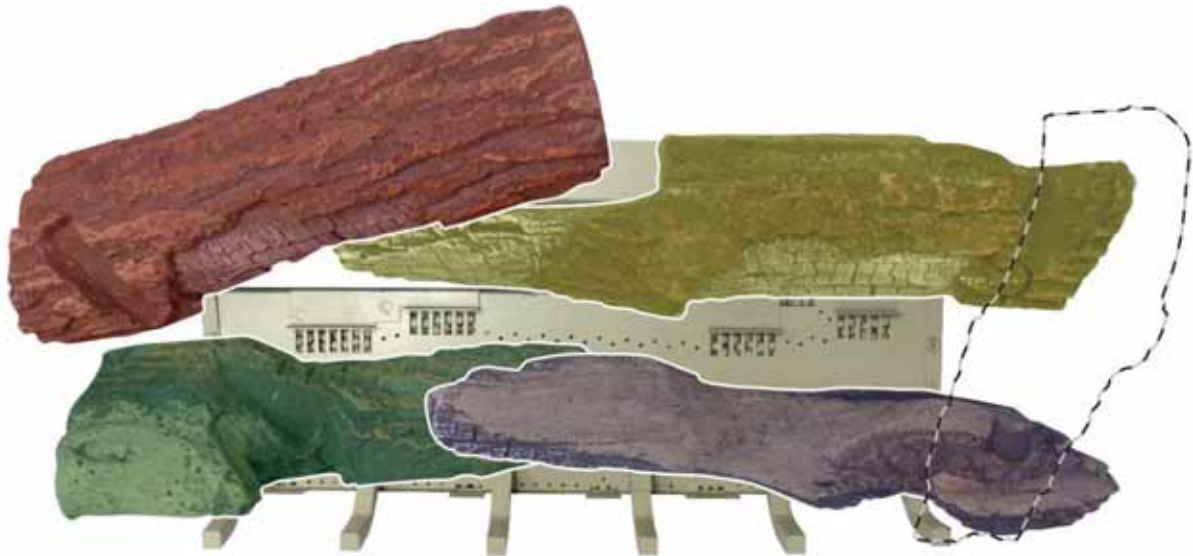
TOP VIEW



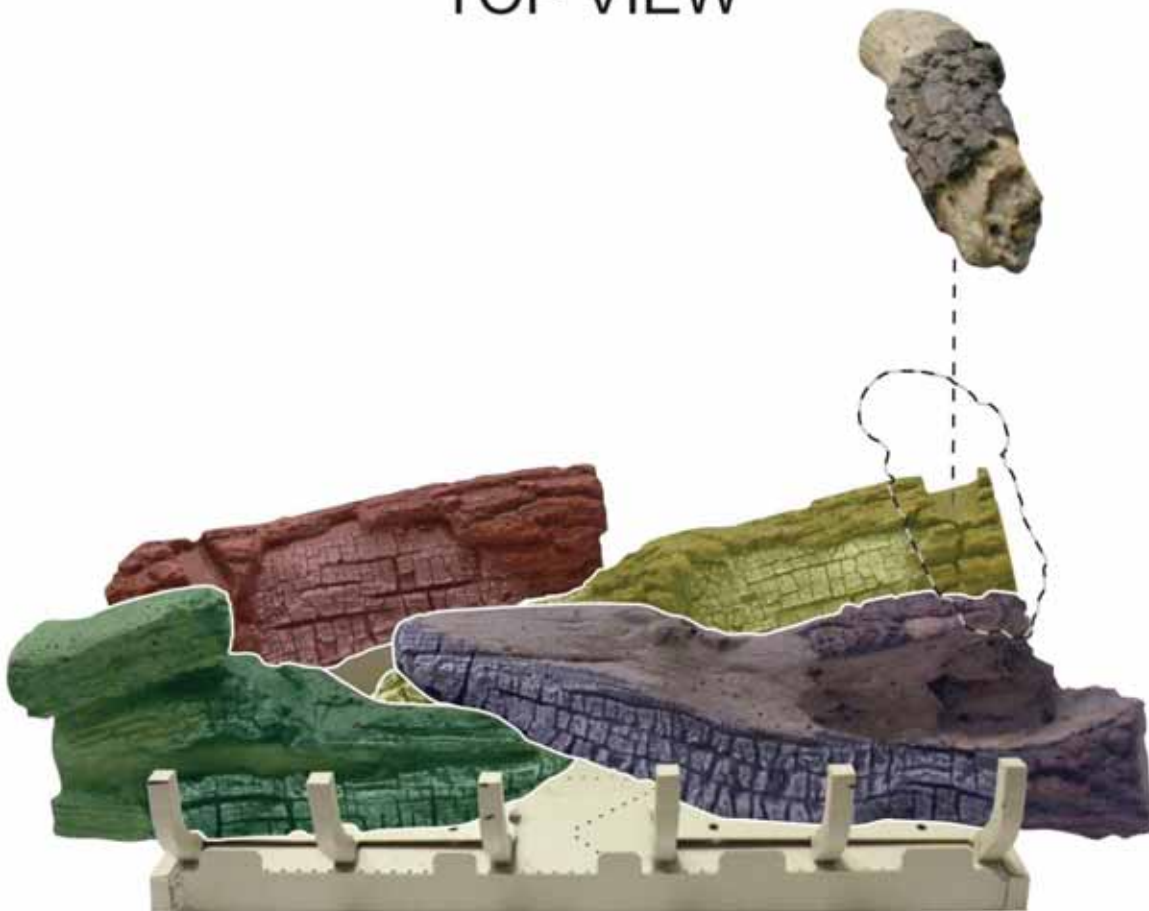
FRONT VIEW

# LOG PLACEMENT ALS-24YK

5. Insert boss on Log F into recess on right side of Log C and Log B. See image below.



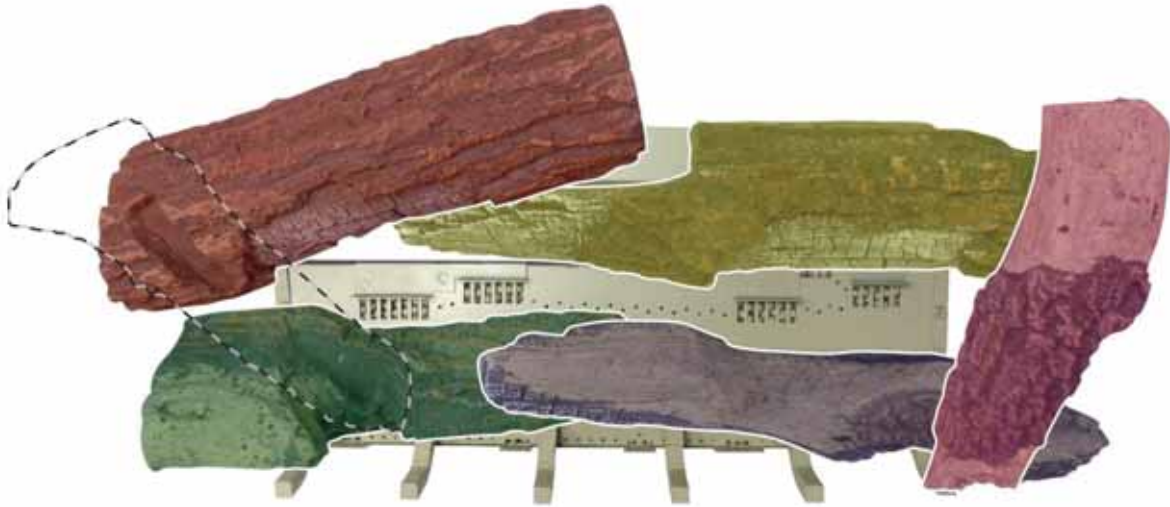
TOP VIEW



FRONT VIEW

# LOG PLACEMENT ALS-24YK

6. Insert boss on Log E into recess on Log D and resting on Log A. See image below.



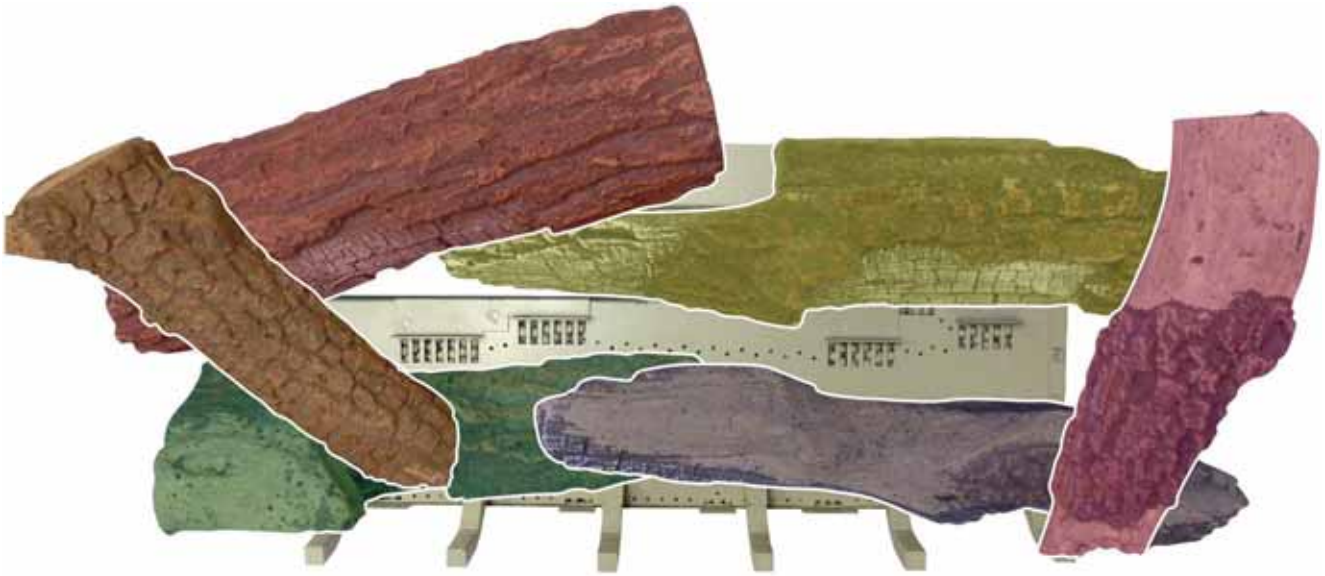
TOP VIEW



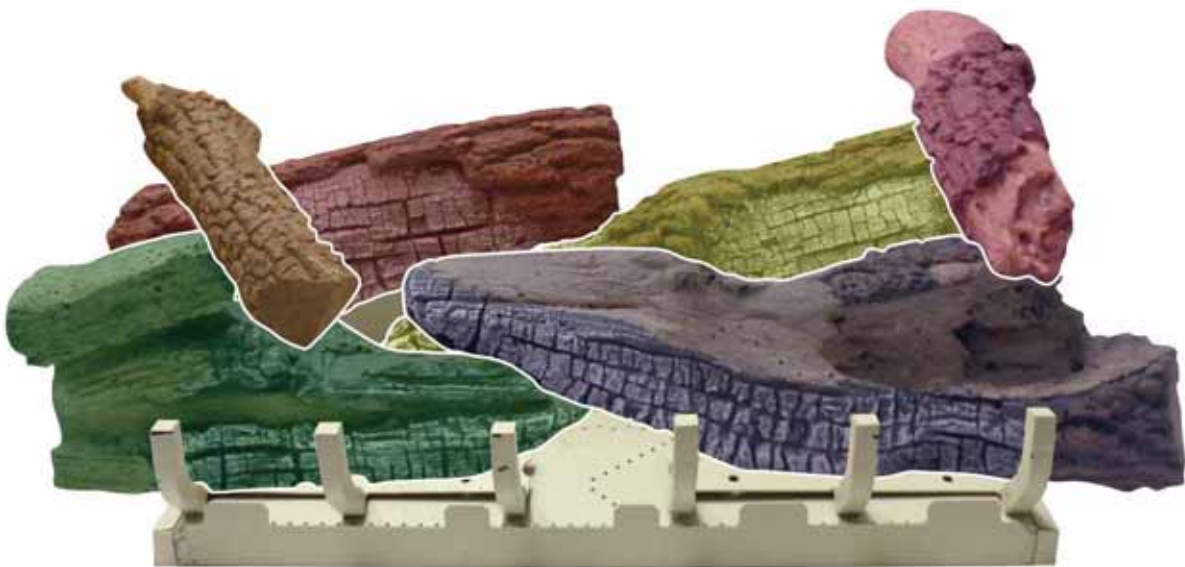
FRONT VIEW

# LOG PLACEMENT ALS-24YK

7. Log placement is completed.



TOP VIEW



FRONT VIEW

# ALS-30YK LOG IDENTIFICATION

Log Description	Part Number	Front View	Top View
Log A	R10271		
Log B1	R10261		
Log B2	R10272		
Log C	R10274		
Log D	R10273		
Log E	R10268		
Log F	R10262		

# LOG PLACEMENT ALS-30YK

Before you begin: Do not, handle these logs with your bare hands! Always wear gloves to prevent skin irritation. After handling logs, wash your hands gently with soap and water.

## All Logs

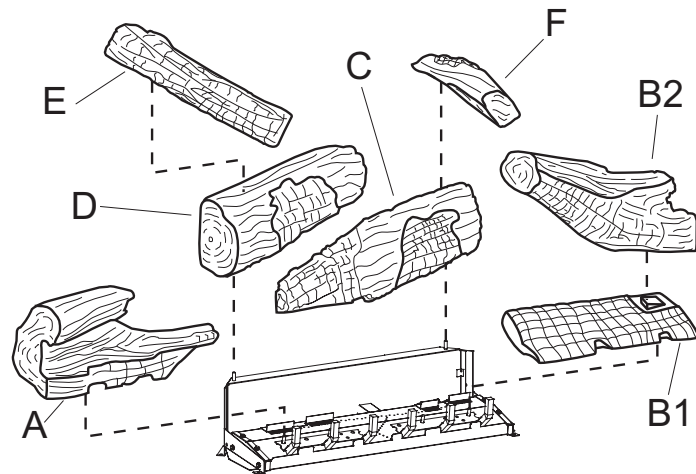
The positioning of the logs is critical to the safe and clean operation of this heater. Sooting and other problems may result if the logs are not properly and firmly positioned in the appliance.

### ⚠ WARNING

This appliance is equipped for (natural or propane) gas. Field conversion is not permitted.

### ⚠ WARNING

Failure to position the parts in accordance with this diagram or failure to use only parts specifically approved with this appliance may result in property damage or personal injury.



Log Placement  
LS-30YK Logs

Figure 3

## Ember Placement

Apply loose material (glowing embers) per appropriate Installation Instructions and Owner's Manual. Replacement of loose material (glowing embers) must be purchased from Empire Comfort Systems, Inc. Application of excess loose material (glowing embers) may adversely affect performance of the heater. **WARNING:** All previously applied loose material must be removed prior to reapplication.

Replacement Loose Material (glowing embers)	Part Number
ALS-30YK	15970
Platinum Bright Embers	PE-20-1

**Note:** A single layer of embers is to be used when applying Platinum Bright Embers (alone or in combination with production embers) to the burner.

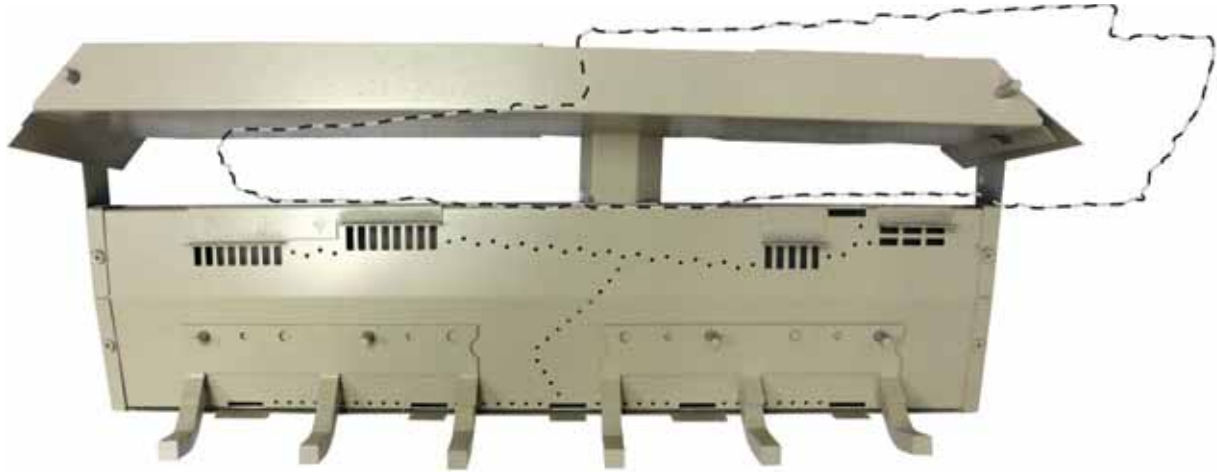
Attention: Do not use Figure 3 to order replacement logs. Refer to Page 35 Parts List and Parts View to order logs for your appropriate model number.

Scan this code to see the log assembly video.

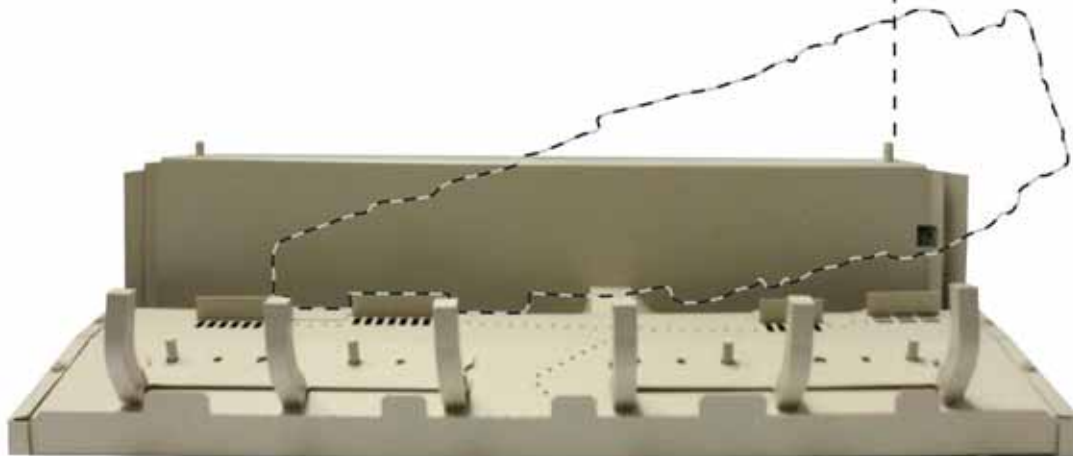


# LOG PLACEMENT ALS-30YK

1. Place Log C onto right rear burner pin as shown below.



TOP VIEW

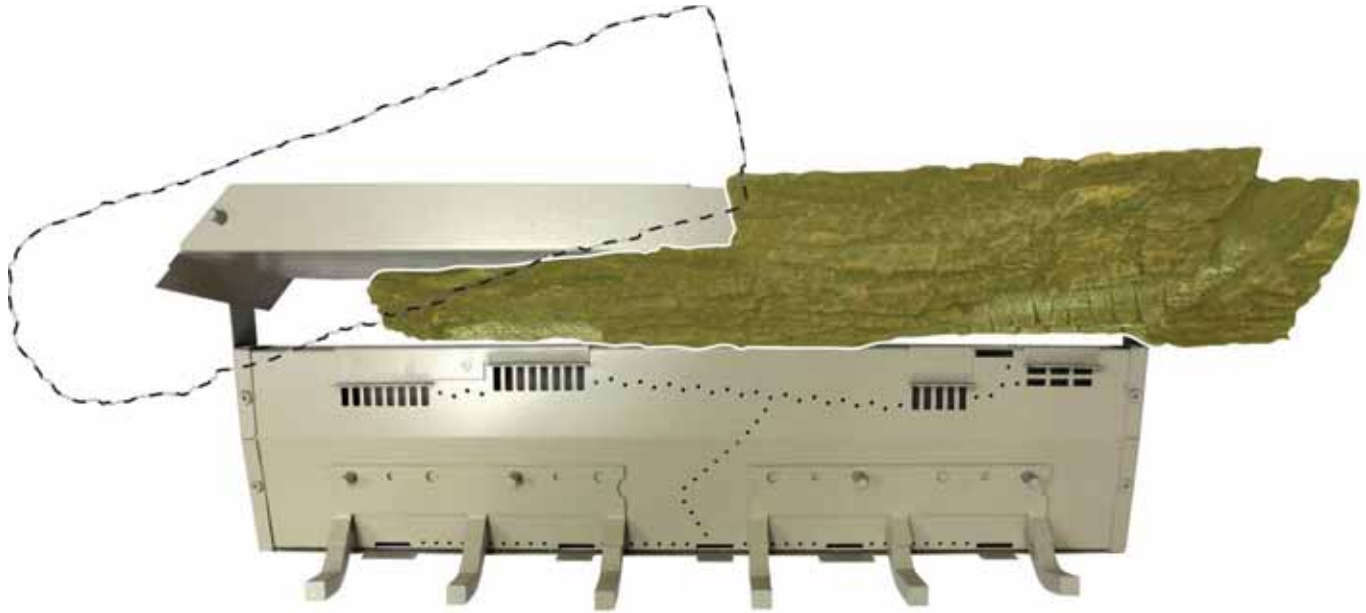


FRONT VIEW

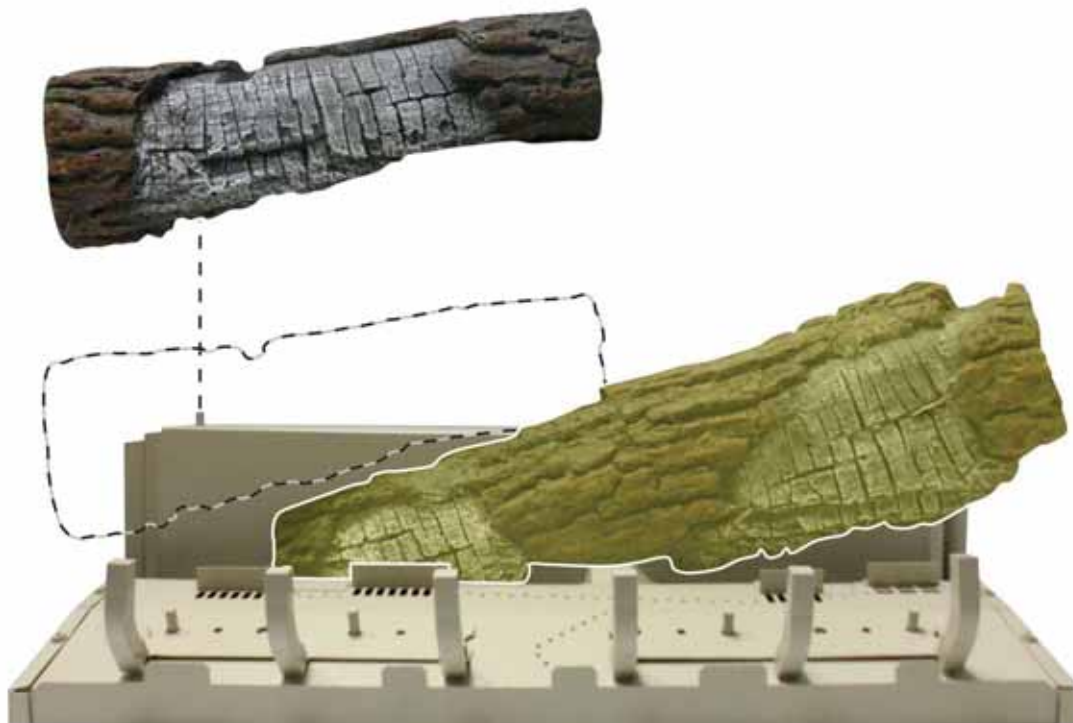


## LOG PLACEMENT ALS-30YK

2. Place Log D onto left rear burner pin as shown below.



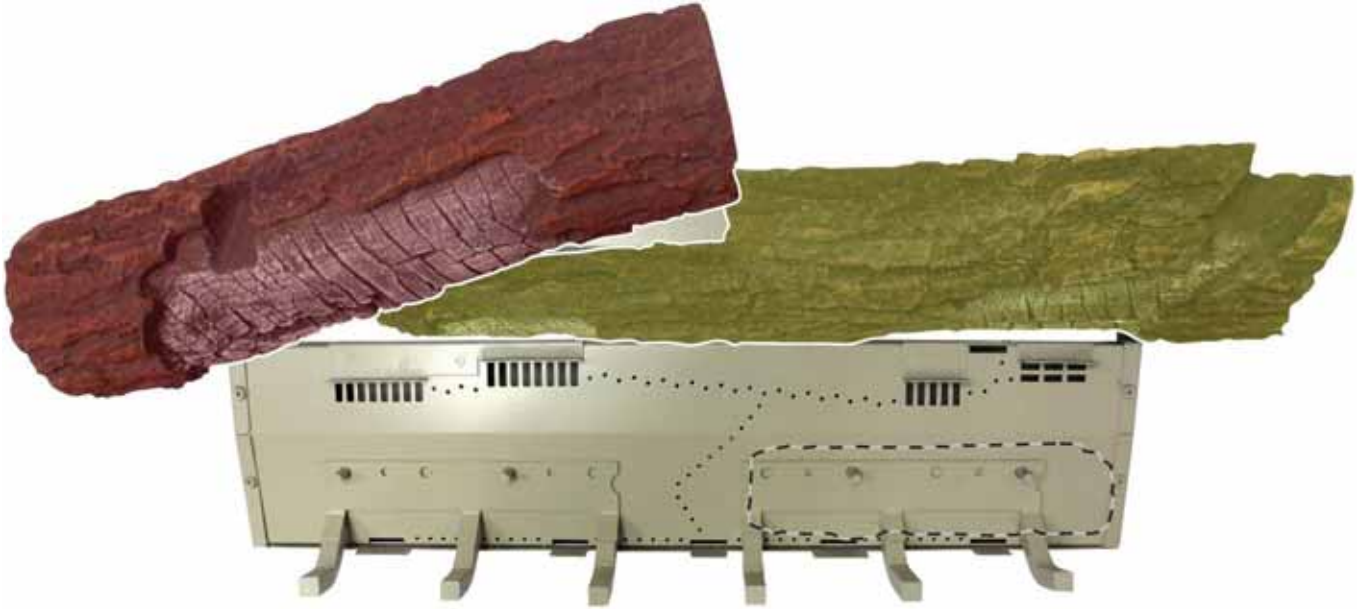
TOP VIEW



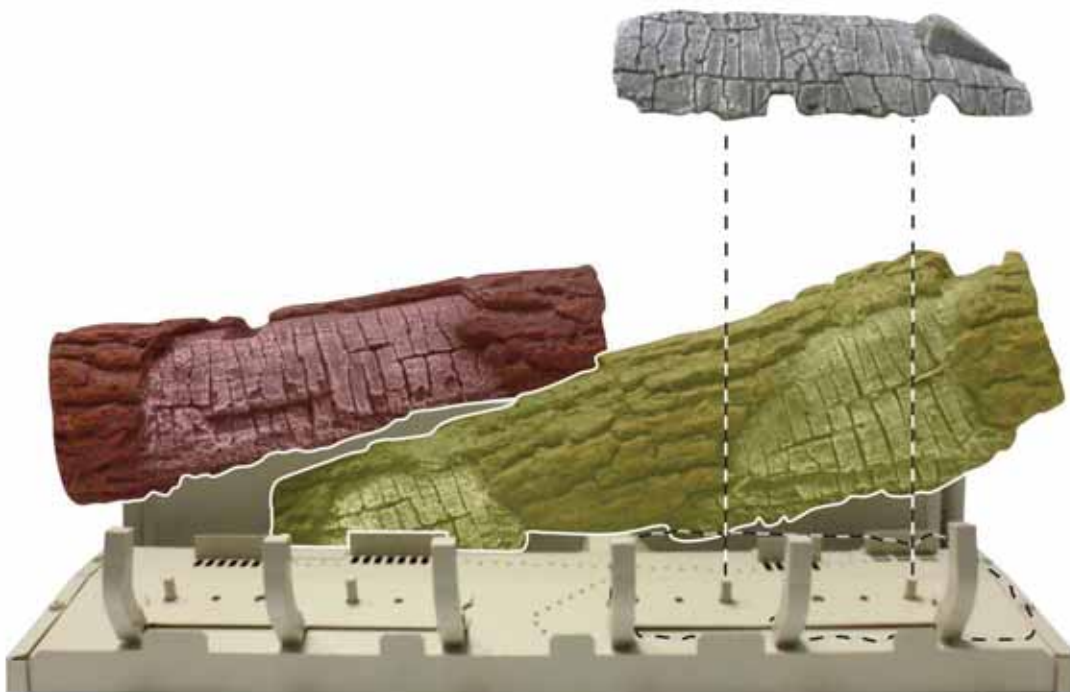
FRONT VIEW

# LOG PLACEMENT ALS-30YK

3. Place Log B1 onto two front right burner pins as shown below.



TOP VIEW



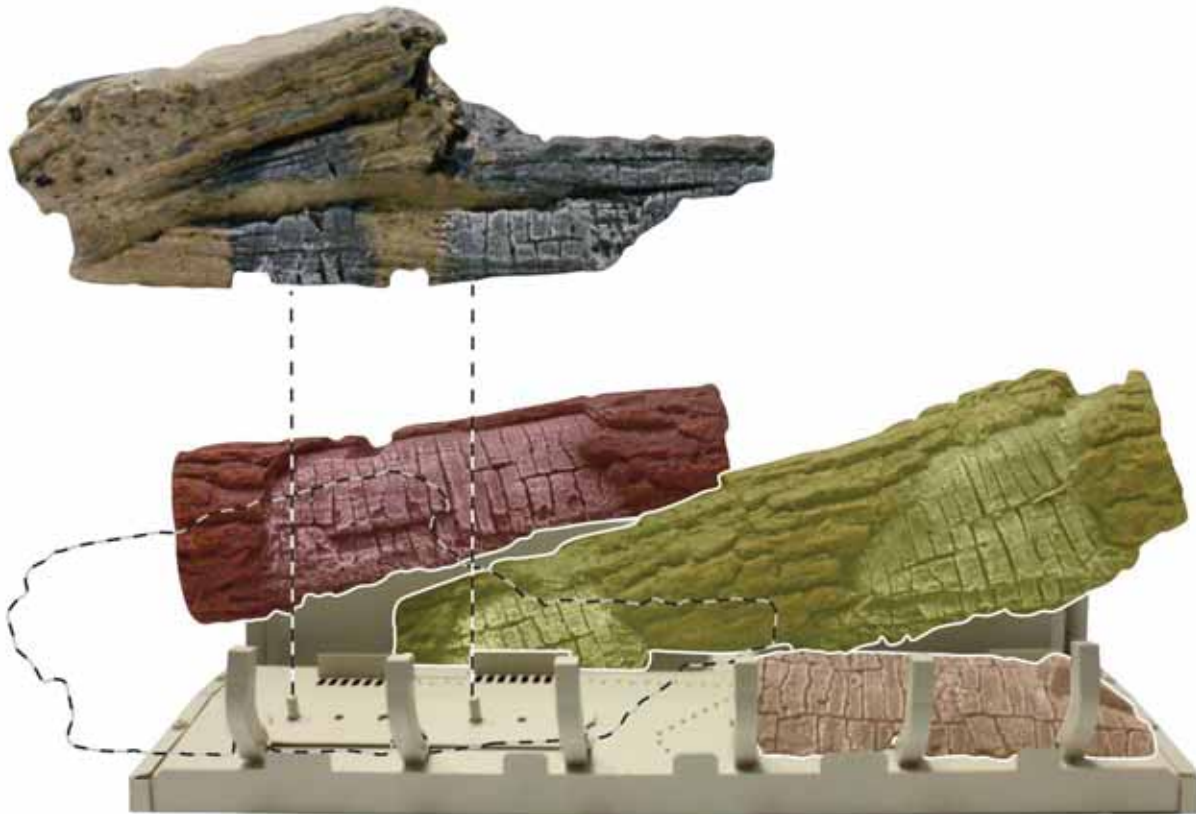
FRONT VIEW

# LOG PLACEMENT ALS-30YK

4. Place Log A onto two left front burner pins as shown below.



TOP VIEW



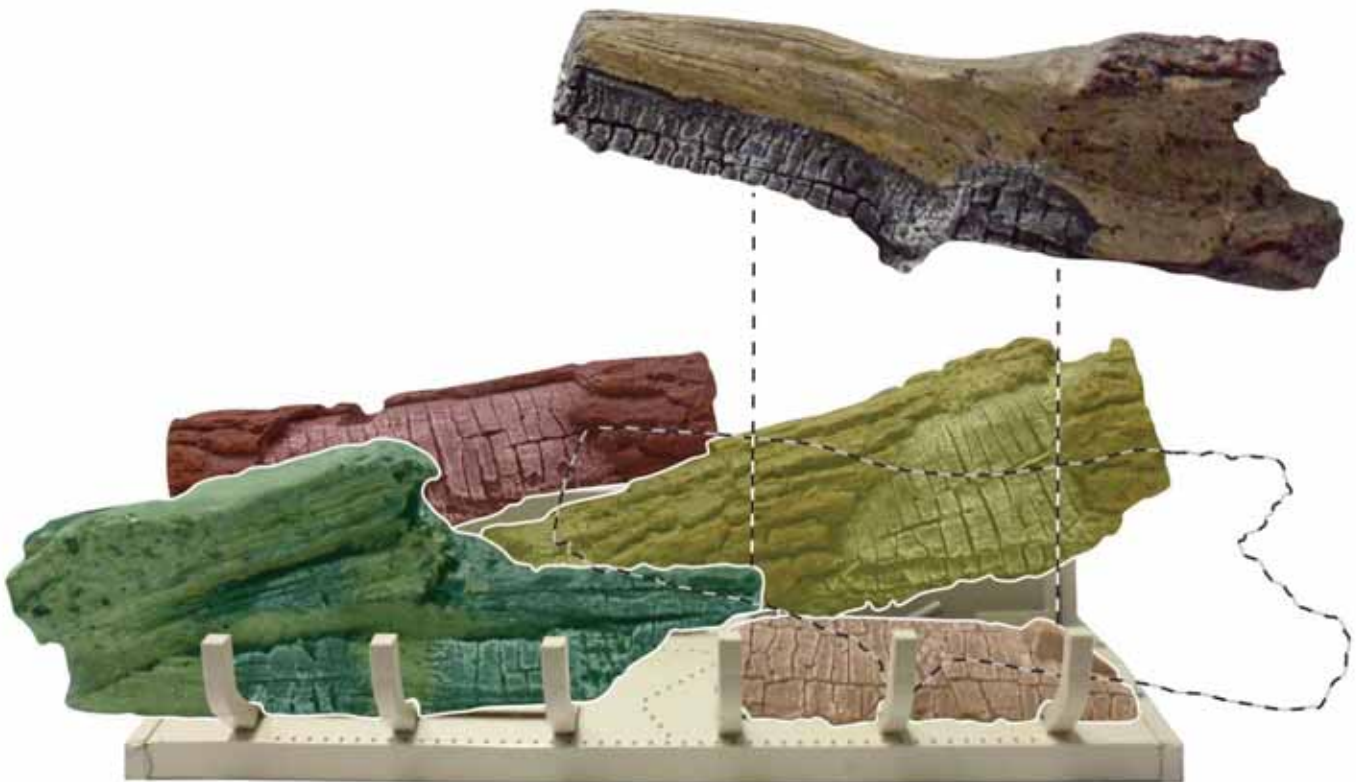
FRONT VIEW

# LOG PLACEMENT ALS-30YK

5. Place Log B2 onto notch on Log B1. Groove on bottom of Log B2 will rest on Front Log A as shown below.



TOP VIEW



FRONT VIEW

# LOG PLACEMENT ALS-30YK

6. Insert boss on Log F into recess on right side of Log C and Log B. See image below.



TOP VIEW



FRONT VIEW

# LOG PLACEMENT ALS-30YK

7. Insert boss on Log E into recess on Log D. Rest Log E onto Log A as shown below.



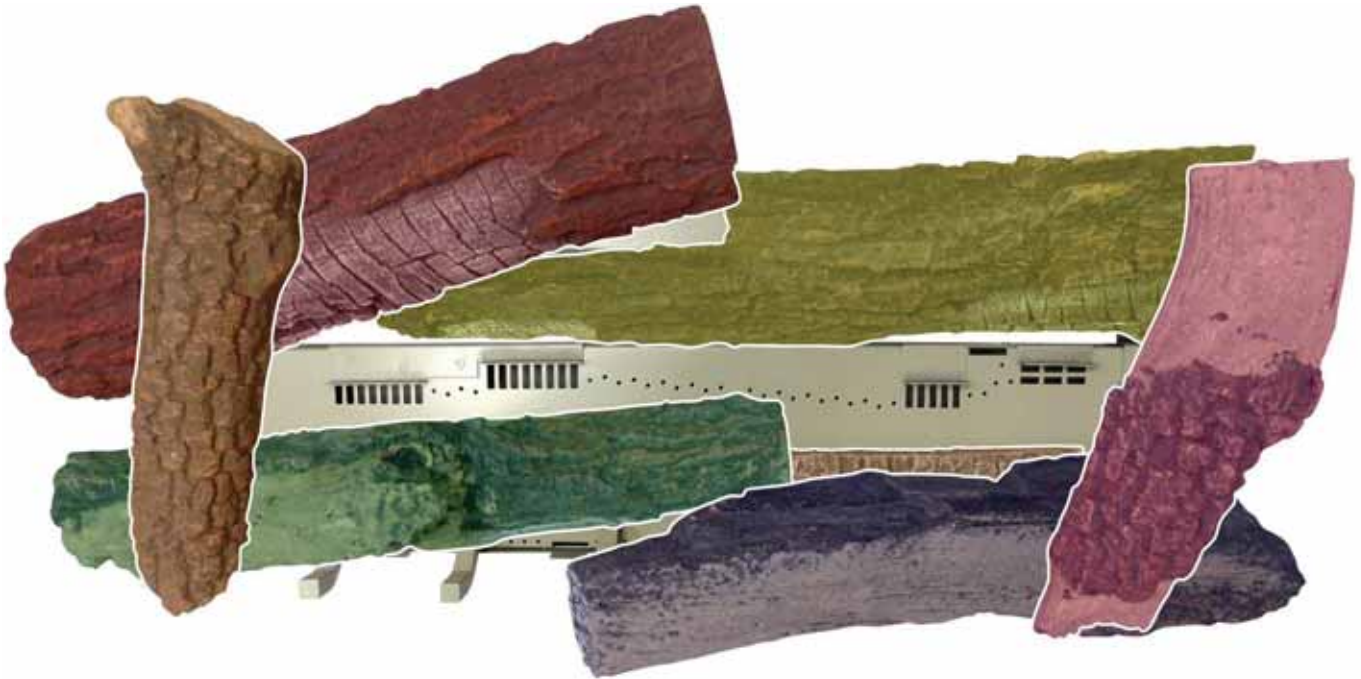
TOP VIEW



FRONT VIEW

# LOG PLACEMENT ALS-30YK

8. Log placement is complete.



TOP VIEW

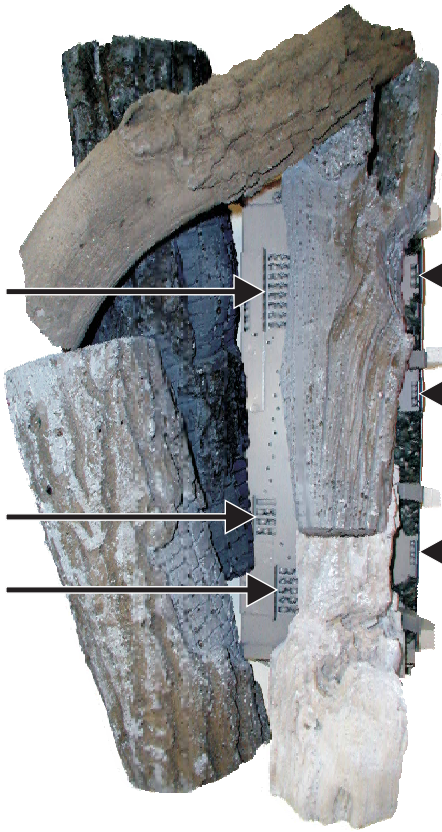


FRONT VIEW

# EMBER PLACEMENT ALS-18YK PHOTOS

Photo 2

Do not cover any large rear ports with loose material (glowing embers).



Do not cover any large front ports with loose material (glowing embers).



Photo 4

Photo 1



Photo 3





# EMBER PLACEMENT ALS-24YK PHOTOS

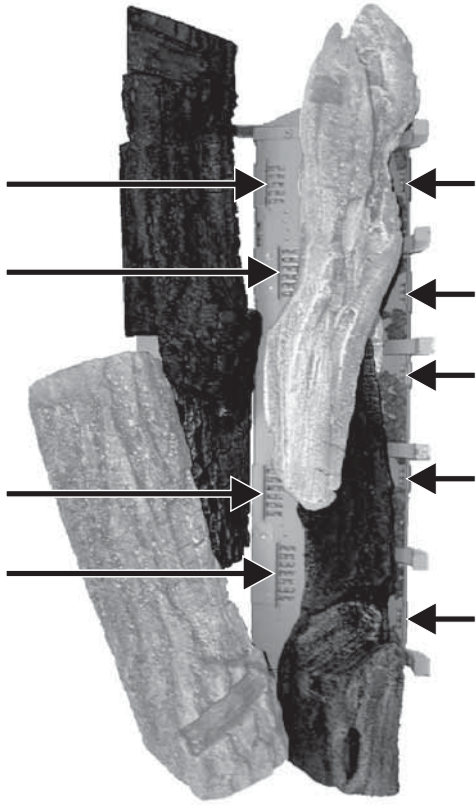
**Photo 1**



**Photo 2**

(Some Logs Have Been Removed For Clarity)

Do not cover any large rear ports with loose material (glowing embers).



Do not cover any large front ports with loose material (glowing embers).



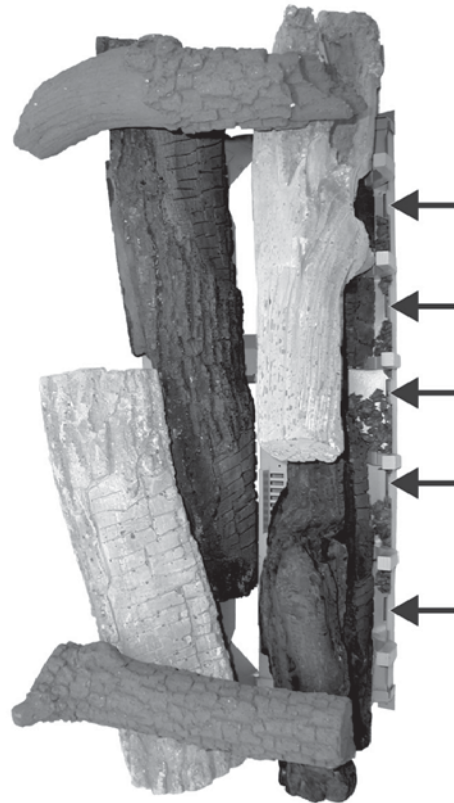
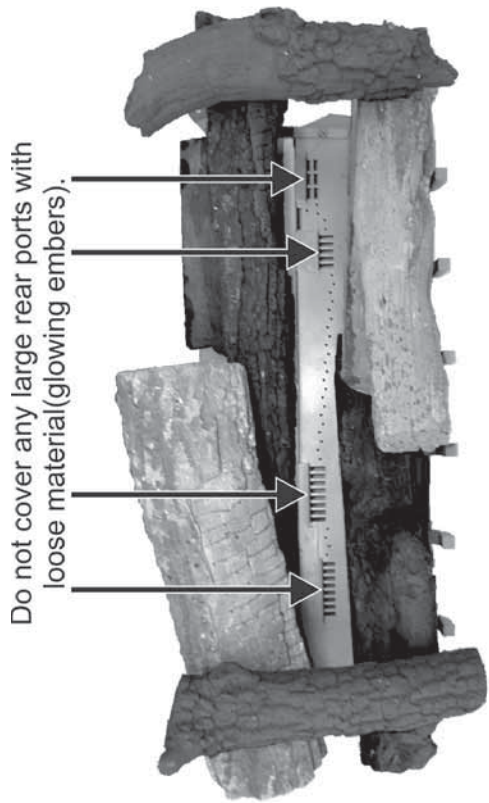
**Photo 3**



**Photo 4**

# EMBER PLACEMENT ALS-30YK PHOTOS

**Photo 2**



**Photo 4**

**Photo 1**



**Photo 3**



# MASTER PARTS DISTRIBUTOR LIST

To Order Parts Under Warranty, please contact your local Empire dealer. See the dealer locator at [www.empirecomfort.com](http://www.empirecomfort.com). To provide warranty service, your dealer will need your name and address, purchase date and serial number, and the nature of the problem with the unit.

To Order Parts After the Warranty Period, please contact your dealer or one of the Master Parts Distributors listed below. This list changes from time to time. For the current list, please click on the Master Parts button at [www.empirecomfort.com](http://www.empirecomfort.com). Please note: Master Parts Distributors are independent businesses that stock the most commonly ordered Original Equipment repair parts for Heaters, Grills, and Fireplaces manufactured by Empire Comfort Systems Inc.

## Dey Distributing

1401 Willow Lake Boulevard  
Vadnais Heights, MN 55101

**Phone:** 651-490-9191

**Toll Free:** 800-397-1339

**Website:** [www.deyistributing.com](http://www.deyistributing.com)

**Parts:** Heater, Hearth and Grills

## Victor Division of F. W. Webb Company

200 Locust Street  
Hartford, CT 06114

**Phone:** 860-722-2433

**Toll Free:** 800-243-9360

**Fax:** 860-293-0479

**Toll Free Fax:** 800-274-2004

**Websites:** [www.fwwebb.com](http://www.fwwebb.com) & [www.victormfg.com](http://www.victormfg.com)

**Parts:** Heater, Hearth and Grills

## East Coast Energy Products

10 East Route 36  
West Long Branch, NJ 07764

**Phone:** 732-870-8809

**Toll Free:** 800-755-8809

**Fax:** 732-870-8811

**Website:** [www.eastcoastenergy.com](http://www.eastcoastenergy.com)

**Parts:** Heater, Hearth and Grills

# HOW TO ORDER REPAIR PARTS

## Parts Not Under Warranty

Parts can be ordered through your Service Person, Dealer, or a Master Parts Distributor. See this page for the Master Parts Distributors list. For best results, the **service person or dealer** should order parts through the distributor. Parts can be shipped directly to the **service person/dealer**.

## Warranty Parts

Warranty parts will need a proof of purchase and can be ordered by your Service Person or Dealer. Proof of purchase is **required** for warranty parts.

All parts listed in the Parts List have a Part Number. When ordering parts, first obtain the Model Number and Serial Number from the name plate on your equipment. Then determine the Part Number (**not** the Index Number) and the Description of each part from the following illustration and part list. Be sure to give all this information . . .

Appliance Model Number \_\_\_\_\_ Part Description \_\_\_\_\_

Appliance Serial Number \_\_\_\_\_ Part Number \_\_\_\_\_

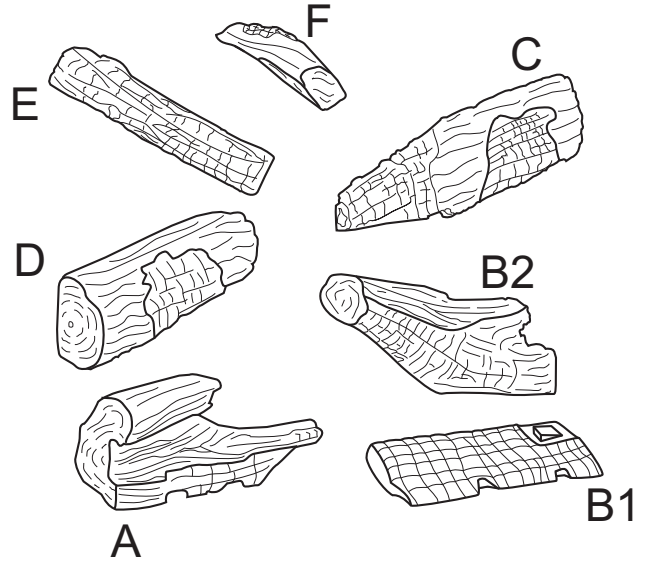
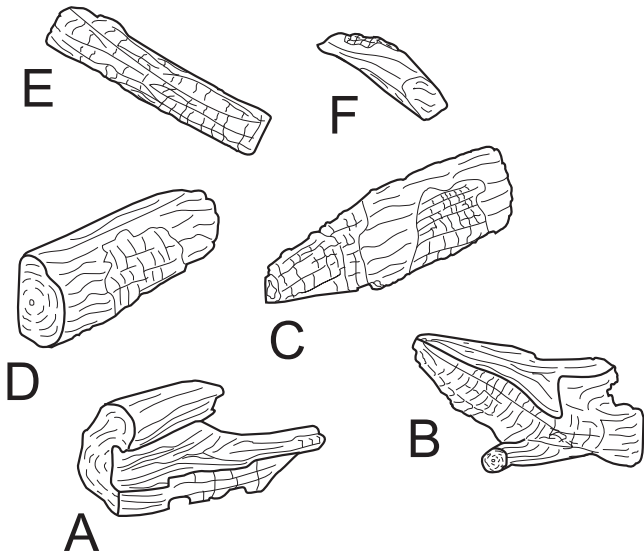
Type of Gas (Propane or Natural) \_\_\_\_\_

Do not order bolts, screws, washers or nuts. They are standard hardware items and can be purchased at any local hardware store.

Shipments contingent upon strikes, fires and all causes beyond our control.

# PARTS LIST & PARTS VIEW

**Attention:** When ordering parts, it is very important that **part number** and **description** of part coincide.



ALS-18YK-1		
INDEX LETTER	DESCRIPTION	PART NUMBER
A	FRONT LEFT LOG	R10257
B	FRONT RIGHT LOG	R10258
C	REAR RIGHT LOG	R10260
D	REAR LEFT LOG	R10259
E	TOP LEFT LOG	N/A
F	TOP CENTER LOG	R10262

ALS-30YK-1		
INDEX LETTER	DESCRIPTION	PART NUMBER
A	FRONT LEFT LOG	R10271
B1	EMBER BED LOG	R10261
B2	FRONT RIGHT LOG	R10272
C	REAR RIGHT LOG	R10274
D	REAR LEFT LOG	R10273
E	TOP LEFT LOG	R10268
F	TOP CENTER LOG	R10262

ALS-24YK-1		
INDEX LETTER	DESCRIPTION	PART NUMBER
A	FRONT LEFT LOG	R10264
B	FRONT RIGHT LOG	R10265
C	REAR RIGHT LOG	R10267
D	REAR LEFT LOG	R10266
E	TOP LEFT LOG	R10268
F	TOP CENTER LOG	R10262

**USE ONLY MANUFACTURER'S REPLACEMENT PARTS. USE OF ANY OTHER PARTS COULD CAUSE INJURY OR DEATH.**



A Registered Trademark of Empire Comfort Systems Inc.  
918 Freeburg Ave. Belleville, IL 62220

If you have a general question about our products, please e-mail us at [info@empirecomfort.com](mailto:info@empirecomfort.com).

If you have a service or repair question, please contact your dealer.